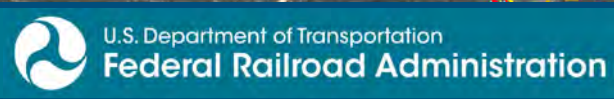
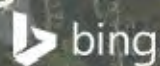


0 1,500 3,000  
 Feet  
 1 inch = 3,000 feet  
 @ 11 x 17 inches  
 Projection: Lambert Conformal Conic  
 State: Plane Virginia North FIPS 4501 Feet  
 North American Datum of 1983  
 Imagery/Basemap Source: 2015 Bing  
 Aerial Imagery; ESRI World Transportation

- Legend**
- - - Category 1 Moderate Noise Impact Contour
  - Category 1 Severe Noise Impact Contour
  - Category 1 Moderate Noise Impacts
  - Category 1 Severe Noise Impacts
  - - - Category 2 Moderate Noise Impact Contour
  - Category 2 Severe Noise Impact Contour
  - Category 2 Moderate Noise Impacts
  - Category 2 Severe Noise Impacts
  - - - Category 3 Moderate Noise Impact Contour
  - Category 3 Severe Noise Impact Contour
  - Category 3 Moderate Noise Impacts
  - Category 3 Severe Noise Impacts
  - CSXT Mileposts
  - Track - Existing
  - 1 Stations
  - 1 Proposed Stations
  - CSXT ROW (County Parcel Data)
  - City/County Boundary

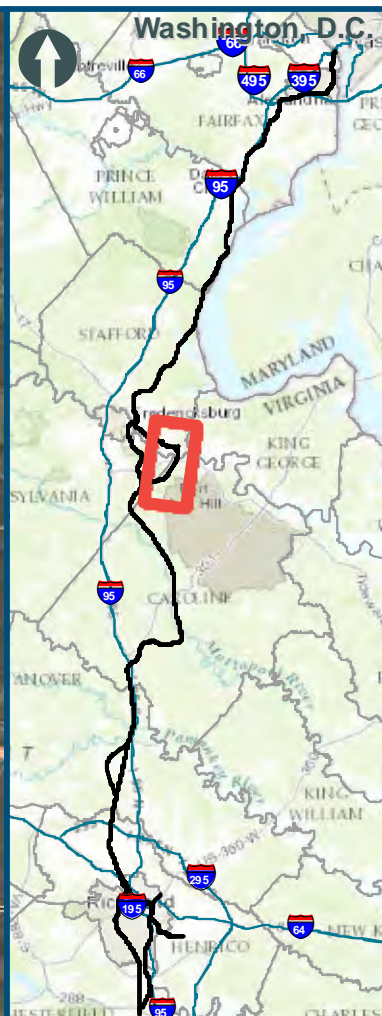
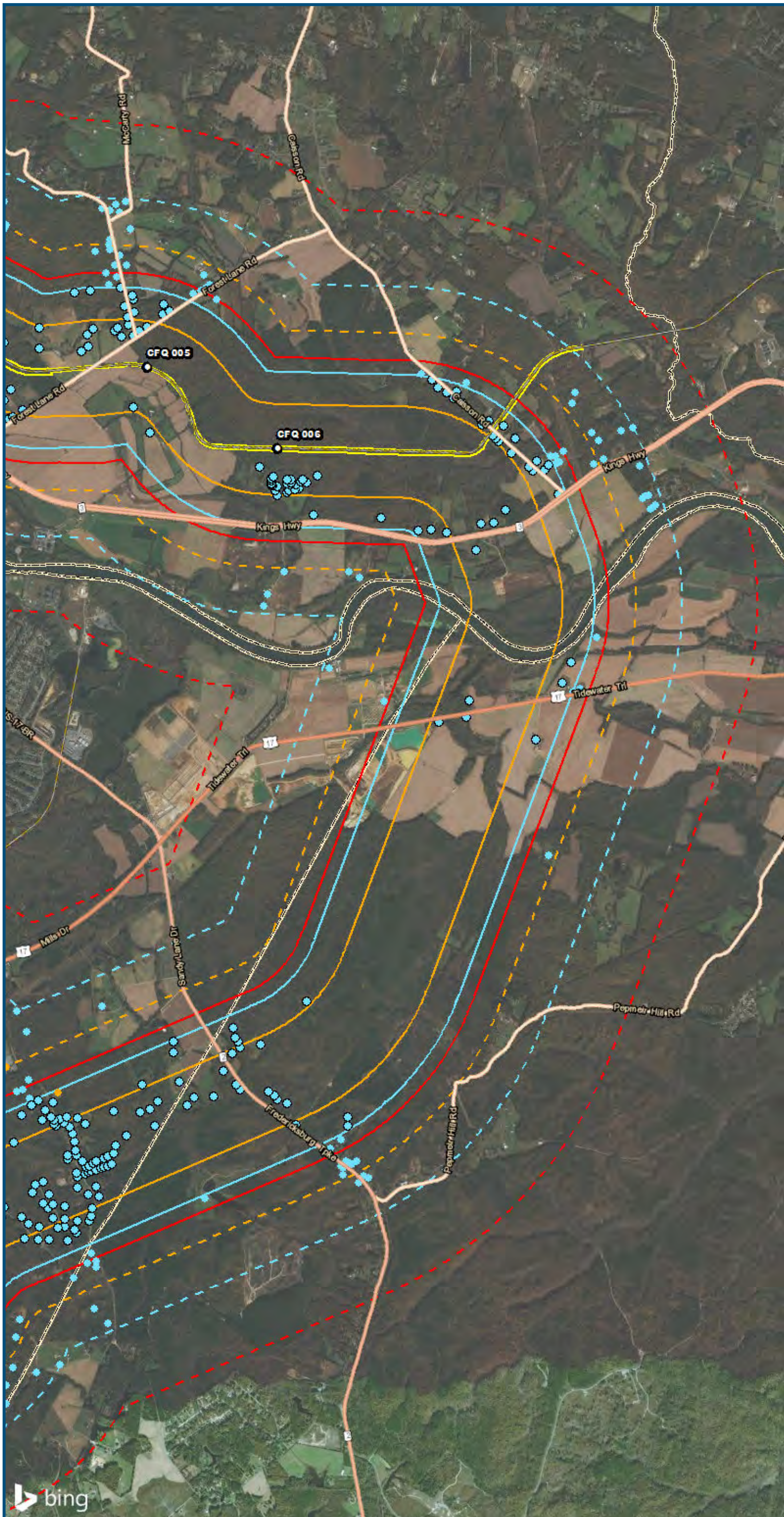
**Appendix D  
 Noise Analysis  
 Area 3C:  
 Fredericksburg**



www.DC2RVArail.com



\\dcis-main\gis\_data\GIS\Projects\0115-46\_VA\_Depot\Rail-Public\Tech\_Reports\Noise\NoiseandVibration\Map\_Versions\NoiseVib\_Area3C\_Mapbook\_11x17\_WEB.mxd | Last Updated: 08.15.2017



0 1,500 3,000  
 Feet  
 1 inch = 3,000 feet  
 @ 11 x 17 inches  
 Projection: Lambert Conformal Conic  
 State Plane Virginia North FIPS 4501 Feet  
 North American Datum of 1983  
 Imagery/Basemap Source: 2015 Bing  
 Aerial Imagery; ESRI World Transportation

- Legend**
- - - Category 1 Moderate Noise Impact Contour
  - Category 1 Severe Noise Impact Contour
  - Category 1 Moderate Noise Impacts
  - Category 1 Severe Noise Impacts
  - - - Category 2 Moderate Noise Impact Contour
  - Category 2 Severe Noise Impact Contour
  - Category 2 Moderate Noise Impacts
  - Category 2 Severe Noise Impacts
  - - - Category 3 Moderate Noise Impact Contour
  - Category 3 Severe Noise Impact Contour
  - Category 3 Moderate Noise Impacts
  - Category 3 Severe Noise Impacts
  - CSXT Mileposts
  - Track - Existing
  - 1 Stations
  - 1 Proposed Stations
  - CSXT ROW (County Parcel Data)
  - City/County Boundary

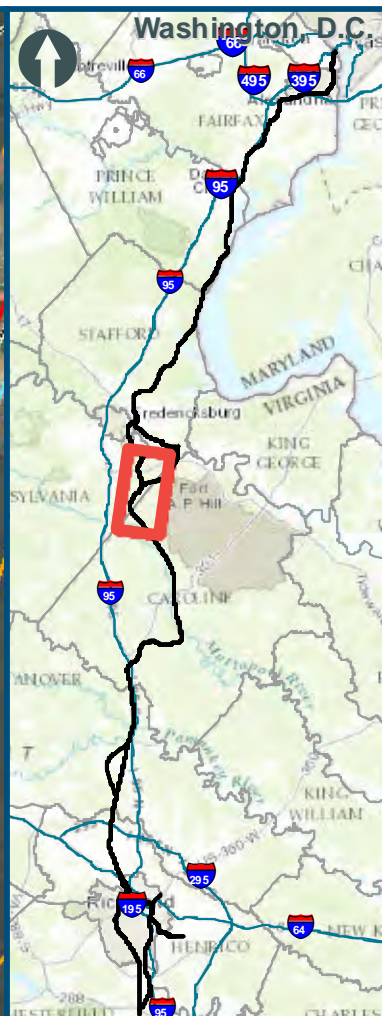
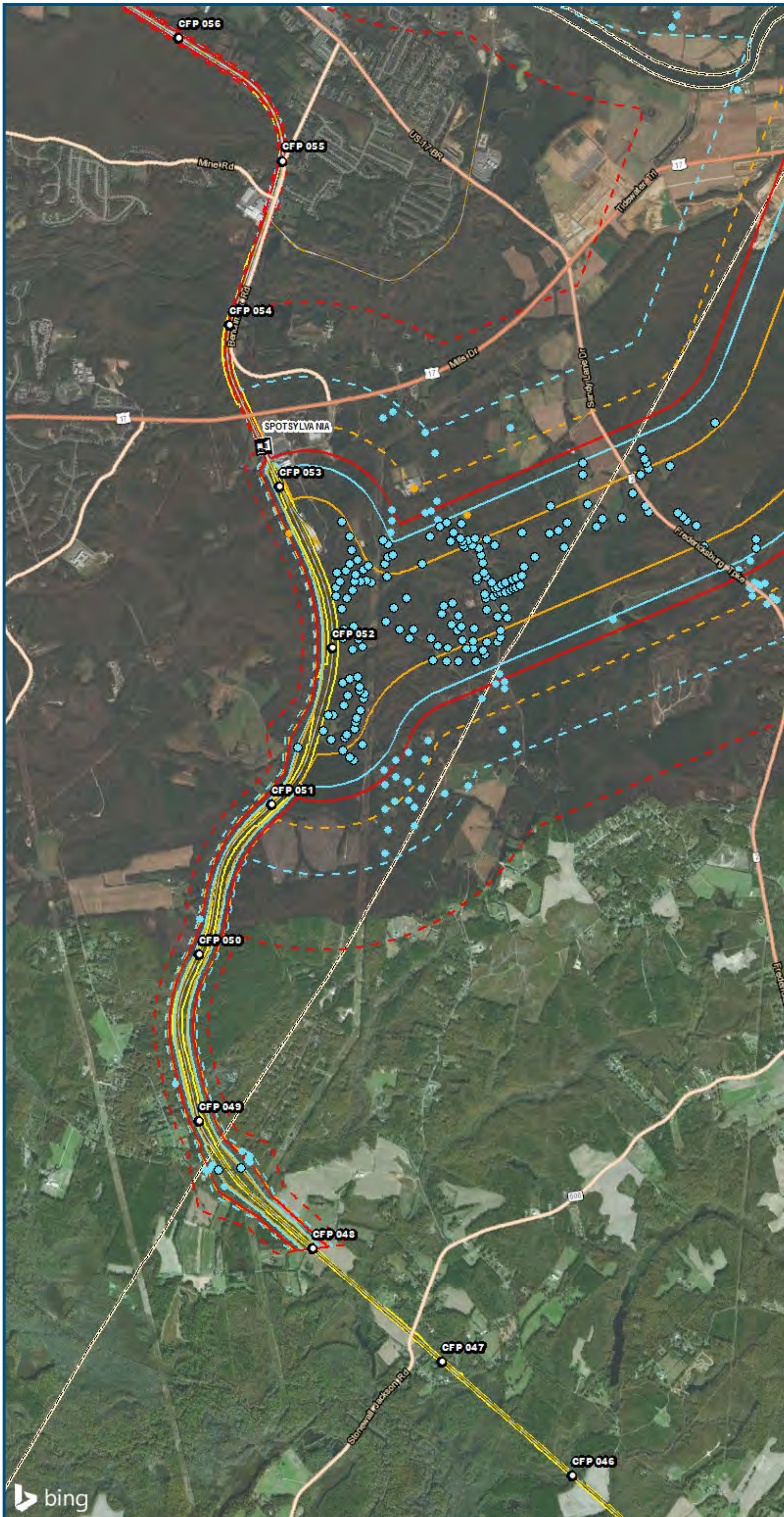
**Appendix D  
 Noise Analysis  
 Area 3C:  
 Fredericksburg**

\\dcis-main\gis\_data\GIS\Projects\0115-46\_VA\_Depot\Rail-Public\Tech\_Reports\Noise\Map\Area3C\_Mapbook\_11x17\_WEB.mxd | Last Updated: 08.15.2017



[www.DC2RVArail.com](http://www.DC2RVArail.com)





0 1,500 3,000  
 Feet  
 1 inch = 3,000 feet  
 @ 11 x 17 inches  
 Projection: Lambert Conformal Conic  
 State Plane Virginia North FIPS 4501 Feet  
 North American Datum of 1983  
 Imagery/Basemap Source: 2015 Bing  
 Aerial Imagery; ESRI World Transportation

**Legend**

- Category 1 Moderate Noise Impact Contour
- Category 1 Severe Noise Impact Contour
- Category 1 Moderate Noise Impacts
- Category 1 Severe Noise Impacts
- Category 2 Moderate Noise Impact Contour
- Category 2 Severe Noise Impact Contour
- Category 2 Moderate Noise Impacts
- Category 2 Severe Noise Impacts
- Category 3 Moderate Noise Impact Contour
- Category 3 Severe Noise Impact Contour
- Category 3 Moderate Noise Impacts
- Category 3 Severe Noise Impacts
- CSXT Mileposts
- Track - Existing
- Stations
- Proposed Stations
- CSXT ROW (County Parcel Data)
- City/County Boundary

**Appendix D  
 Noise Analysis  
 Area 3C:  
 Fredericksburg**

\\dcis-main\gis\_data\GIS\Projects\0115-46\_VA\_Dep\_of\_Rails-Public\Tech\_Reports\Noise\NoiseVib\_Area3C\_Mapbook\_11x17\_WEB.mxd | Last Updated: 08.15.2017



www.DC2RVArail.com

